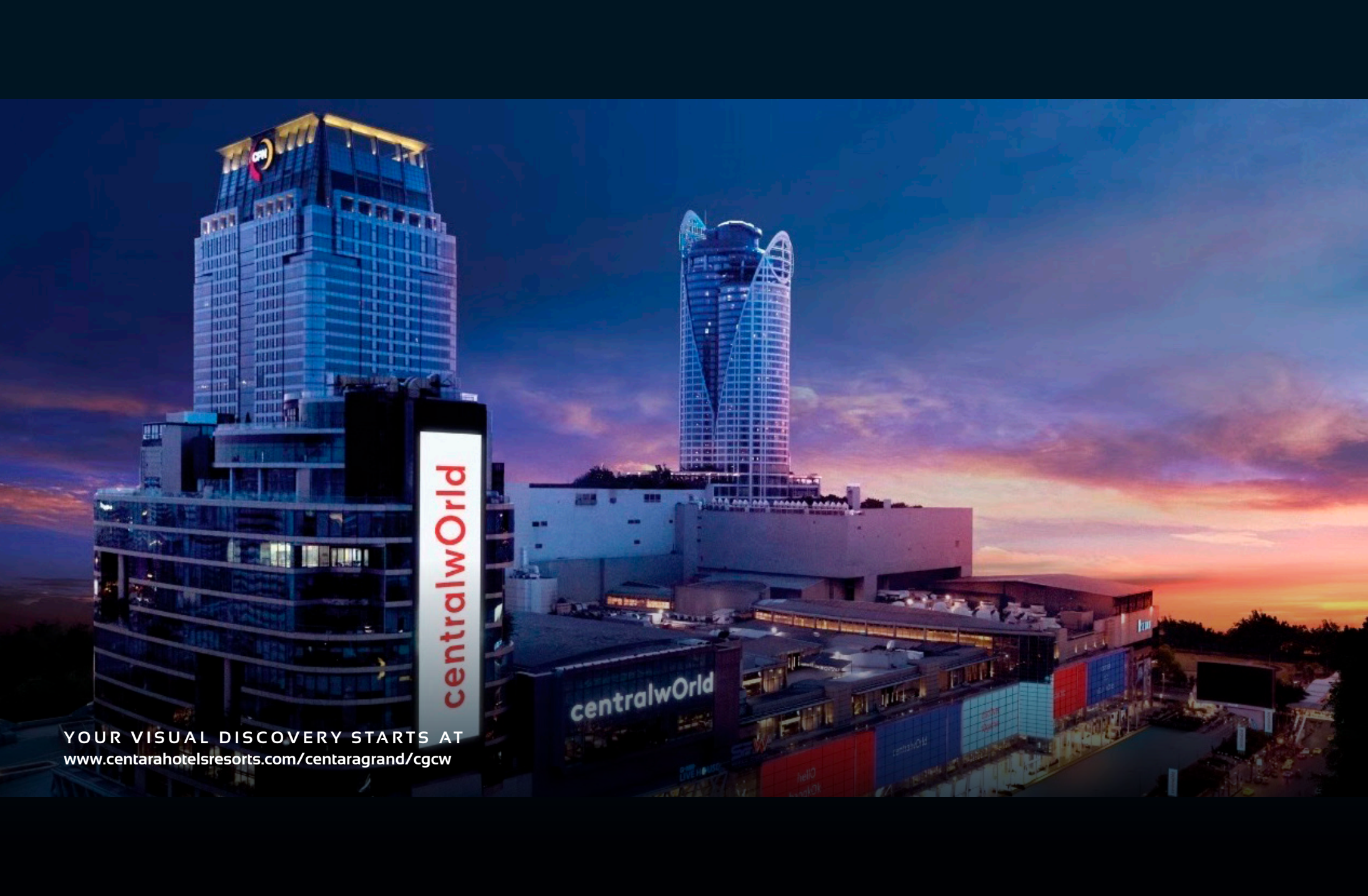


CENTARA
GRAND
& BANGKOK
CONVENTION CENTRE
AT CENTRALWORLD

BANGKOK'S PREMIER MICE VENUE



centralwOrld

centralwOrld

YOUR VISUAL DISCOVERY STARTS AT
www.centarahotelsresorts.com/centaragrand/cgcw

WELCOME TO THE HEART OF BANGKOK





CENTARA GRAND

AT CENTRALWORLD

THE TALK OF THE TOWN

Majestically soaring above the centre of Bangkok's bustling business and shopping districts at Ratchaprasong, Centara Grand at CentralWorld raises the bar for refined hospitality and dining to new heights of excellence.

Rising 235 metres (771 ft) into the sky, the 59-storey hotel was designed to resemble a flowering lotus with a theme incorporating life's four elements - earth, air, fire, and water. The conveniently located hotel provides easy all-around access to the city; Chidlom and Siam BTS Skytrain stations are connected to the hotel via skywalk, and Suvarnabhumi Airport is approximately 45 minutes away under normal traffic conditions.

ELEGANT ACCOMMODATIONS

Behind the hotel's meticulously crafted edifice lies a state-of-the-art, millennium-inspired uptown city-centre hotel with 505 luxury rooms, including 51 suites and 9 Executive Club floors. Beautifully furnished, each guest room features a specially designed bed, individually controlled air-conditioning, and bathroom with large bathtub and shower.

Rooms also excel on the tech side with easy-to-use control panels for lighting and other functions, along with Wifi high-speed internet, flat-screen smart TVs, in-house music, and direct international telephone dialling. All rooms offer a well-stocked minibar/refrigerator and personal in-room safety box big enough to fit a standard sized laptop.

HOLISTIC LIVING

The Wellness Centre at Centara Grand at CentralWorld comprises Spa Cenvaree staffed by the city's top wellness practitioners, Lifestyles on 26 Fitness Studio offering daily classes, and Lifestyles on 26 Fitness Centre complete with trainers and TechnoGym equipment. Other facilities at the Wellness Centre include a Finnish sauna, infrared sauna for women & men, steam baths, steam rooms, outdoor terrace Jacuzzis, outdoor swimming pool with poolside bar.

[illegible]



A WORLD OF DINING

Experience a world of dining pleasures when you organise a meeting, convention, presentation or incentive party with exciting restaurants and bars at Centara Grand & Bangkok Convention Centre at CentralWorld, and enjoy creative cuisine from our team of international chefs.



Located on the 59th floor of the hotel, CRU Champagne Bar crowns Centara Grand at CentralWorld and redefines the art of drinking Champagne. The bar’s name comes from the French word “CRU” denoting vineyards recognised for exceptional quality of wine grapes.



UNO MAS features a menu inspired by Spanish and Mediterranean cuisines, complemented with an exceptional wine list. Its spectacular setting 54 floors up in the sky offers stunning panoramic views of the Bangkok skyline.



COCOA XO is the latest addition to the vast nightlife offerings of Centara Grand at CentralWorld with an emphasis on premium chocolate and cognac. Located on the 57th floor, this alfresco bar and lounge offers spectacular city views, a walk-in cocoa pod accessible through a unique chocolate grotto, and an illuminated cognac cocktail bar.



Red Sky Bar offers 360-degree skyline views of Bangkok from its rooftop location 56 stories high in the sky. Here, guests enjoy sunset in style every day of the week.



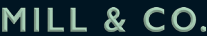
Red Sky is a chic rooftop bistro melded into a wine and martini bar offering 360-degree views of Bangkok. At the 55th floor restaurant, diners enjoy signature dishes including a truffle-infused Wagyu Beef Tenderloin Rossini and a new take on Surf & Turf tower featuring the freshest locally sourced seafood and imported prime steaks.



Ventisi delivers a casual yet elegant all-day dining experience honouring two of the world’s all-time favourite cuisines. Divided with two live island kitchens, masterful chefs pay tribute to authentic Italian flavours and classic Thai cuisine using historical recipes and the finest ingredients from all corners of the Kingdom.



Escape the ordinary at Tea & Tipple. Enjoy freshly brewed coffee, exquisite teas, and handcrafted cocktails. Our signature Thai Afternoon Tea blends authentic flavours with a modern twist, alongside traditional Western delights for a cosmopolitan experience.



Mill & Co., a modern lifestyle retreat in the ground-floor lobby, offers an escape with freshly baked sweet and savoury treats like choux pastries, croissants, Dutch caramel waffles, and artisanal sandwiches. Enjoy with world-famous Starbucks coffee for a delightful experience.

Venue	Type of cuisine	Capacity (seats)	Opening hours	Location
CRU Champagne Bar at Red Sky	Rooftop Bar 360°	100	17:00 - 01:00	59 th floor
COCOA XO	Bar for Chocolate and Cognac lovers	120	16.00 - 01:00	57 th floor
Red Sky Bar	Rooftop Bar 360°	90	16:00 - 01:00	56 th floor
Red Sky	Chic urban bistro dining, wine and martini Bar	230	17:00 - 01:00	55 th floor
UNO MAS	Spanish and Mediterranean	152	12:00 - 23:00	54 th floor
Poolside Dining	Wine, beer and cocktail bar	60	10:00 - 19:00	26 th floor
Ventisi	International and theme dinner buffets	250	06:30 - 22:30	24 th floor
Tea & Tipple	Coffee, teas and a full bar, Afternoon tea	80	08:00 - 22:00	23 th floor
Mill & Co.	Coffee, juices, pastries and refreshments	66	07:00 - 19:00	Ground floor



BANGKOK CONVENTION CENTRE AT CENTRALWORLD



BEST MEETING HOTEL
(THAILAND)
2023



BEST MEETING AND
CONVENTION HOTEL
2023

Bangkok Convention Centre at CentralWorld is the ideal venue for international and regional conventions, conferences, exhibitions, seminars, social events and concerts. Its integrated system provides state-of-the-art facilities, supported by a dedicated team of experienced staff. The convenient location, combined with the superb surroundings of shopping and entertainment options, creates the perfect environment for meetings and conventions.

The Bangkok Convention Centre at CentralWorld is the biggest convention venue in the central business district of Bangkok accommodating events from 10 to 6,000 attendees.

CONVENTION HALL

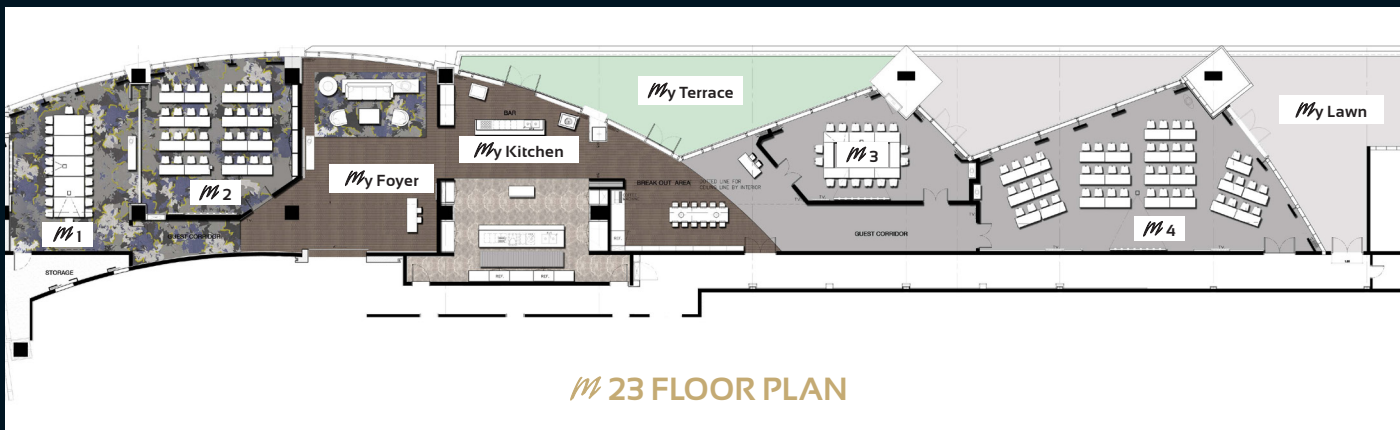
With over 5,000 seats in the pillar-less hall, the flexible design of the stage, together with professional audio-visual and lighting facilities, makes the Convention Hall an ideal place for every type of event concept. The large pre-function areas of 1,291 sqm, and an additional 385 sqm when combined with the spacious open atrium of the convention centre's lobby, can be used for various functions and activities staged against the stunning backdrop of the Bangkok skyline.

WORLD BALLROOM

Located on the same level as the Sky Lobby, the elegant World Ballroom provides state-of-the-art facilities, soundproof wall partitions, large projection screens, and professional audio-video equipment and lighting systems. The pillar-less room with high ceilings is the ideal venue for prestigious gala dinners, cocktail parties, dazzling wedding parties or high-impact company conferences and product presentations. The spacious pre-function area measuring 706 sqm can be used for various activities and offers spectacular views of Bangkok.

LOTUS SUITES 1 - 15 AND EXECUTIVE BOARDROOM

Lotus Suites are available in sizes ranging from 58 - 412 sqm and accommodating from 10 - 400 guests, with full audio-video equipment and natural lighting in some rooms. The spacious pre-function area measures 809 sqm and is ideal for registrations, product displays and enjoying refreshments.



Centara Grand & Bangkok Convention Centre at CentralWorld is the ultimate corporate meeting retreat in Bangkok. **M 23** comprises four dedicated state-of-the-art, natural day lit boardrooms with capacity for 18 to 50 people.

MEETING AND EVENTS

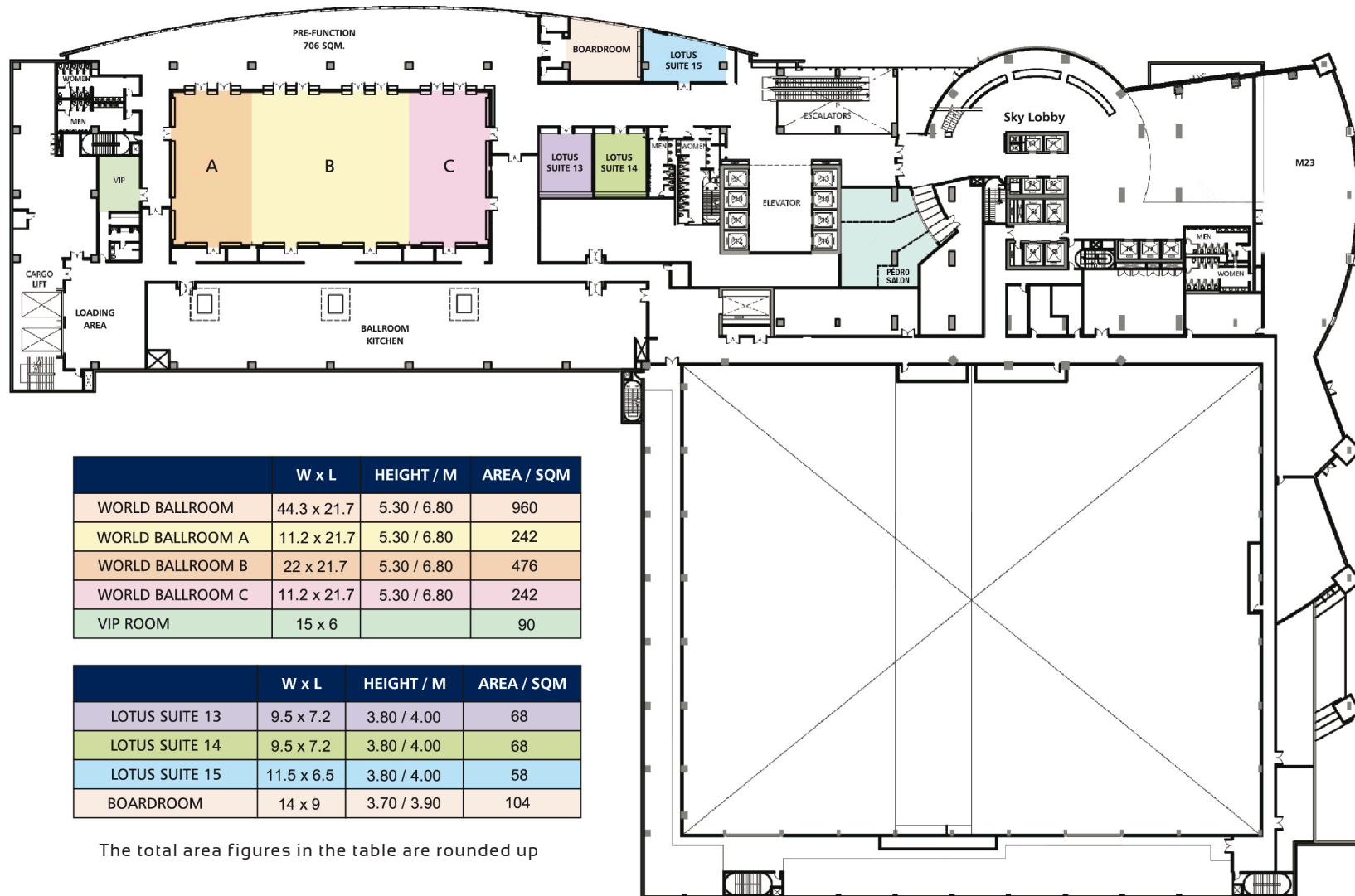
Venue	Location	Area (m²)	Size (m x m)			Height (m)	Classroom	Theatre	Banquet	Cocktail
Convention Centre	22 nd floor	5,250	80.4	x	65.3	13.50	2,500	5,000	3,800	7,000
Convention Centre A1	22 nd floor	1,900	29.2	x	65.3	13.50	900	1,700	1,200	2,200
Convention Centre B1	22 nd floor	3,350	51.1	x	65.3	13.50	1,600	3,300	2,600	4,800
Convention Centre A2 or B2	22 nd floor	2,625	40.1	x	65.3	13.50	1,250	2,500	1,900	3,500
Pre-Function	22 nd floor	1,290		-		4.00	-	-	-	1,000
World Ballroom	23 rd floor	960	44.3	x	21.7	6.80	580	1,000	700	1,200
World Ballroom A / C	23 rd floor	242	11.2	x	21.7	6.80	140	250	170	300
World Ballroom B	23 rd floor	476	22	x	21.7	6.80	220	500	350	600
Pre-Function	23 rd floor	706		-		4.00	-	-	-	500
Lotus Suite 1 - 4	22 nd floor	412	22.5	x	18.4	4.00	200	380	300	550
Lotus Suite 1 / 2 / 3 / 4	22 nd floor	103	11.2	x	19.2	4.00	50	90	80	120
Lotus Suite 5 - 7	22 nd floor	412	22.5	x	18.4	4.00	200	380	300	550
Lotus Suite 5 / 6	22 nd floor	103	11.2	x	9.2	4.00	50	90	80	120
Lotus Suite 7	22 nd floor	206	11.3	x	18.5	4.00	100	190	160	250
Lotus Suite 8	22 nd floor	58	9.4	x	7.5	4.00	20	40	20	30
Lotus Suite 9	22 nd floor	80	9.5	x	9.4	4.00	40	70	70	100
Lotus Suite 10	22 nd floor	100	11.6	x	10.5	4.00	60	100	80	140
Lotus Suite 11	22 nd floor	110	11.3	x	10.7	4.00	60	110	100	150
Lotus Suite 12	22 nd floor	95	9.7	x	10.4	4.00	50	80	80	110
Pre-Function	22 nd floor	809		-		4.00	-	-	-	-
Lotus Suite 13 / 14	23 rd floor	68	9.5	x	7.2	4.00	24	50	30	40
Lotus Suite 15	23 rd floor	58	11.5	x	6.5	4.00	18	30	20	20
Pre - Function	23 rd floor	158		-		4.00	-	-	-	-
VIP Room	23 rd floor	90		-		4.00	-	-	-	-
Board Room	23 rd floor	104	14	x	9	3.90	-	-	-	-
M 1 & M 2 at M 23	23 rd floor	133		-		5.50	50	80	60	100
M 1	23 rd floor	63		-		5.50	22	44	-	-
M 2	23 rd floor	70		-		5.50	32	64	-	-
M 3	23 rd floor	55		-		5.50	18	36	-	-
M 4	23 rd floor	135		-		5.50	50	90	80	120
M y Foyer	23 rd floor	90		-		5.00	-	-	-	40
M y Kitchen	23 rd floor	60		-		3.30	-	-	-	60
M y Terrace	23 rd floor	56 / 85		-		3.30	-	-	-	60
M y Lawn	23 rd floor	204		-		3.30	-	-	-	120

CONVENTION CENTRE LEVEL



The total area figures in the table are rounded up

WORLD BALLROOM LEVEL





LEVEL 22 - CONVENTION HALL AND LOTUS SUITE 1-12

Floor Area	5,250 m ² / 80.4 x 65.3 m
Foyer Area	1,676 m ²
Floor Strength	500 kg / m ²
Floor Type	Concrete, underlay with carpet tile
Ceiling Height	11.8 m to 13.5 m
Stage Construction	Stage size is adjustable
Partition	1 set (soundproof)
Changing Room	2 rooms up to 140 m ²
VIP Room	1 room
Additional Meeting Rooms	Lotus Suite 1-4, combination of 4 rooms Lotus Suite 5-7, combination of 3 rooms Lotus Suite 8, with natural lighting Lotus Suite 9, with natural lighting Lotus Suite 10, with natural lighting Lotus Suite 11, with natural lighting Lotus Suite 12, with natural lighting
Foyer Area	809 m ²

LEVEL 23 - WORLD BALLROOM, LOTUS SUITES 13-15 AND EXECUTIVE BOARDROOM

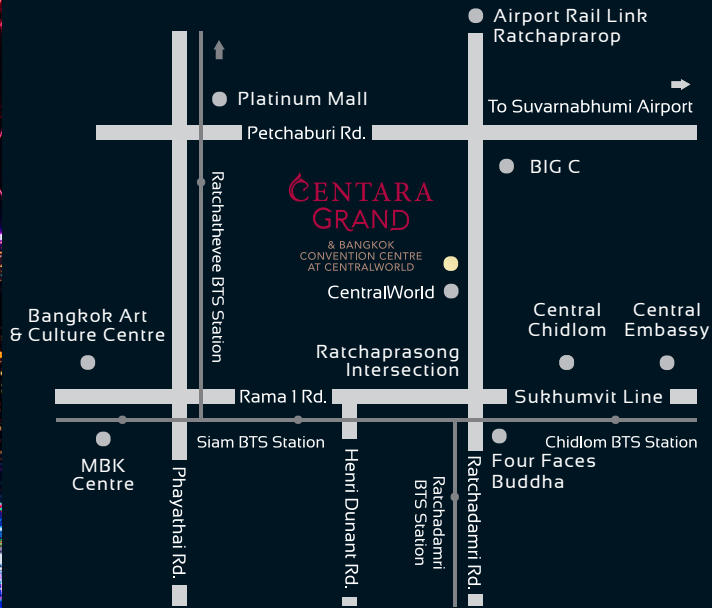
Floor Area	960 m ² / 44.3 x 21.7 m
Foyer Area	706 m ²
Floor Type	Concrete, underlay and carpet covering
Ceiling Height	6.8 m
Stage Construction	Stage size is adjustable
Partition	2 set (soundproof)
VIP Room	1 furnished room with shower and toilet
Additional Meeting Rooms	Executive Boardroom, with natural lighting Lotus Suite 13 Lotus Suite 14 Lotus Suite 15, with natural lighting

GENERAL INFORMATION

Public Access	8 passenger lifts, capacity @ 2,500 kg 3 passenger lifts, capacity @ 1,800 kg 2 escalators connecting the World Ballroom to the hotel lobby and CentralWorld shopping complex
Service Access	2 cargo lifts, capacity @ 3,000 kg Door size 2.35 x 2.30 m Capacity size 2.40 x 6.00 m capacity height 2.5 m 1 car lift, capacity @ 2,500 kg Door size 2.35 x 2.10 m Capacity size 2.40 x 6.00 m capacity height 2.35 m
Audio Facilities	Digital conference system Potable and wireless microphones 24 channels mixing console
Visual Facilities	Fixed and motorized screens 6 x 9 m Moveable screens 6 x 4 m Video and data projectors
SIS Facilities	Available upon request
Communication System	PA-LAN system CCTV system Telephone transferring system
Internet Access	Hi-speed internet (wired and wireless)
Service Facilities	Registration counters at 22 nd and ground floors Secretariat Offices Business Centre Media Room First Aid Room Digital Signage / Praying Room
Catering Services	By Centara Grand at CentralWorld



BANGKOK'S FIRST FULLY INTEGRATED HOTEL, CONVENTION VENUE AND LIFESTYLE LIVING MALL



CENTRALWORLD

The Largest Lifestyle Shopping and Dining Destination in Bangkok

400 Fashion Brands & Flagship Stores / 300 F&B include Michelin-Star & Michelin-Guide

Discover your favourite local, high street and designer brands.

Explore the Thai Way of Life in the Hug Thai Zone

Hug Thai brings together authentic Thai street food, organic fruits and vegetables, and local handicrafts for international tourists.

Hug Crafts

A space showcasing eco-friendly products ranging from fashion and textiles to souvenirs and handmade silver pieces - all crafted from the heart.

Experience Nightlife at Groove CentralWorld

Boasting more than 6,000 sqm of lively gastropubs and world-class lifestyle dining destinations, Groove CentralWorld is a must-visit hangout in the heart of Bangkok.

Accessibility

Located in the centre of Bangkok's Ratchaprasong District, CentralWorld is easily reached by both Siam and Chidlom BTS stations.

CENTARA
GRAND
& BANGKOK
CONVENTION CENTRE
AT CENTRALWORLD

CENTARA GRAND & BANGKOK CONVENTION CENTRE AT CENTRALWORLD

999/99 RAMA 1 ROAD, PATHUMWAN, BANGKOK 10330 THAILAND
T +66 (0)2 100 1234 • F +66 (0)2 100 1235 • E CGCWSALES@CHR.CO.TH

WWW.CENTARAHOTELSRESORTS.COM

INSTAGRAM



FACEBOOK



WEBSITE

